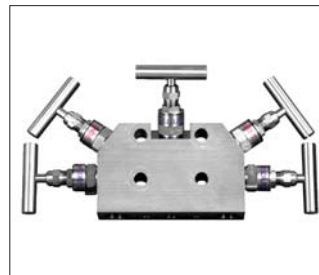


# DP SYSTEMS

Instrumentation protection



Accessories



GRP Enclosures



Hot boxes



Sunshades



Non-rigid valve jackets

DELIVERY PROGRAM

# Contents

---



## Rigid instrumentation protection

Enclosures series 22-55	3
Mounting possibilities	4
Internal accessories	5
Hot boxes	6



## Non-rigid protection

Non-rigid valve jackets	7
-------------------------	---



## Sunshades

Sunshades	7
-----------	---



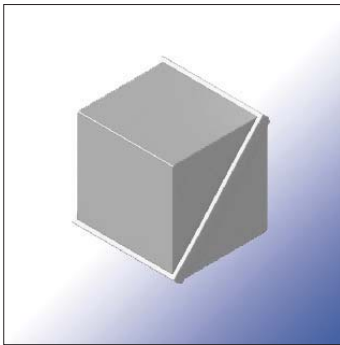
## Ordering info

Ordering information	8
Addresses	8

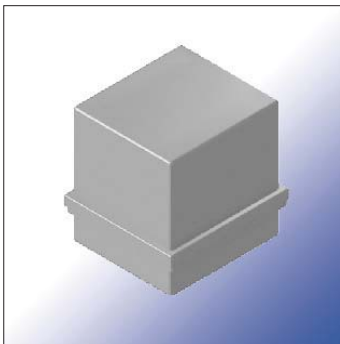
# Rigid instrumentation protection

## GRP enclosures series 22 - 55

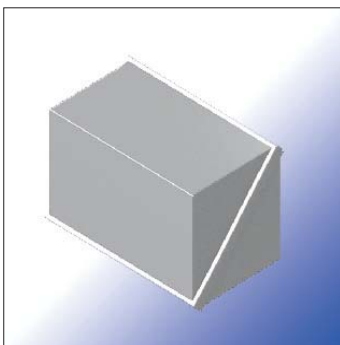
DP Systems enclosures are mechanically moulded from glass reinforced polyester using metal matching moulds with a satin gloss external and internal finish.



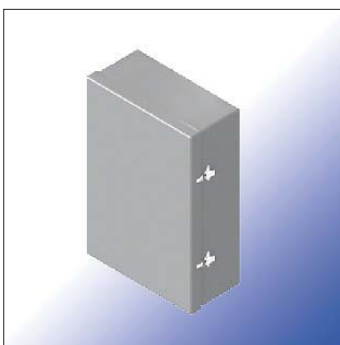
Series 22			
Weight (kg)	Dimensions		Description
15	Series 22-1	Series 22-1A	cuboid-shaped with diagonal split between lid and base.
	Width: 340 mm	Width: 430 mm	
	Height: 430 mm	Height: 430 mm	
	Depth: 400 mm	Depth: 400 mm	



Series 33			
Weight (kg)	Dimensions		Description
17	Width: 390 mm	cuboid-shaped with horizontal split between lid and base.	
	Height: 430 mm		
	Depth: 430 mm		



Series 44-1			
Weight (kg)	Dimensions		Description
18	Width: 700 mm	Longitudinal shape with diagonal split between lid and base.	
	Height: 430 mm		
	Depth: 400 mm		



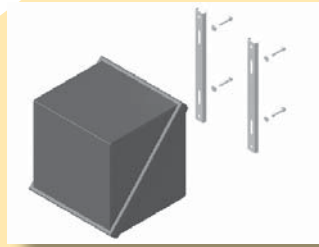
Series 55-1			
Weight (kg)*	Dimensions*		Description
21	Width: 440 mm	Rectangular shaped with opening door.	
	Height: 640 mm		
	Depth: 270 mm		

\* Other sizes and weight available.

# Rigid instrumentation protection

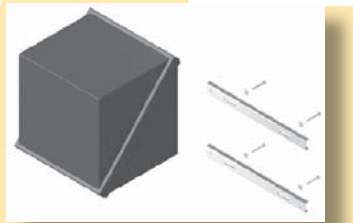
## Mounting possibilities

DP Systems offers several possibilities to mount your enclosure.



Louvres

Vertical mounting straps



Horizontal mounting straps



Tube bundle

- Steam
- Electrical

Cable entries



Base mounting



Earthing



See also "ordering information"  
on page 8.

## Internal accessories available

Enclosures can be ordered with or without internal accessories.



Window



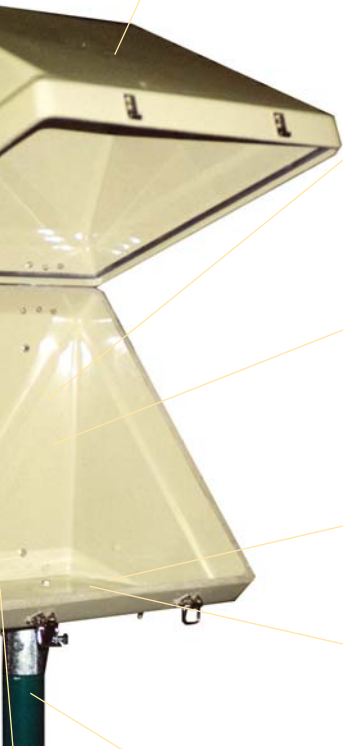
Transmitter



Manifold



Heater  
• Electrical  
• Steam



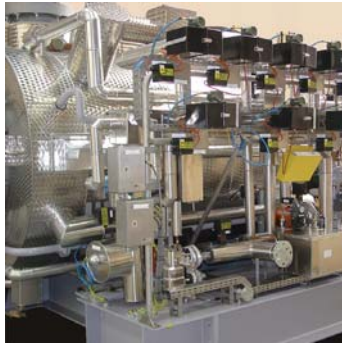
Junction boxes

straps

Internal post



# Rigid instrumentation protection



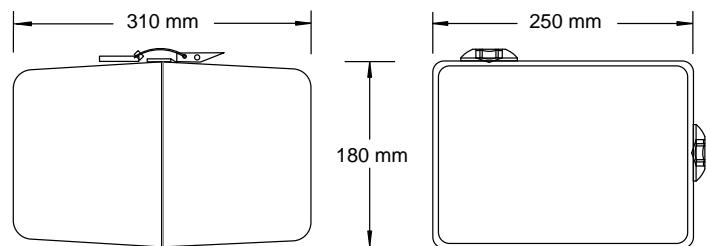
## Hot boxes

These enclosures are matching mouldings of GRP double skinned thermal insulating material, and are designed to fit around the primary "wetted" parts of differential pressure transmitters and similar instruments in conjunction with either steam or electric heating.

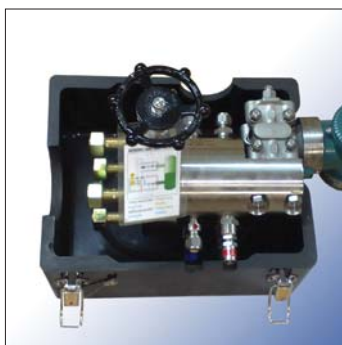
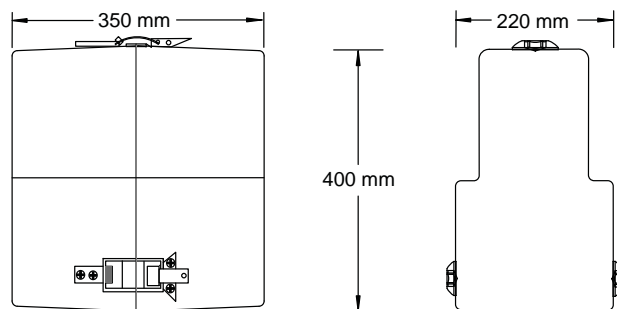
Double skinned constructions offers rugged, impact resistant, low heat loss construction with non-ingress of hydrocarbons, and enclosures are retained with heavy duty stainless steel toggle fasteners with over centre action. Toggle fasteners are fixed by stainless steel nuts, bolts and washers.



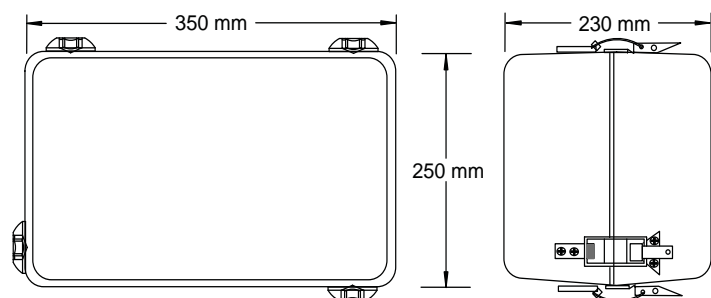
Series 66



Series 77



Series 88



# Non-rigid enclosures / Valve jackets

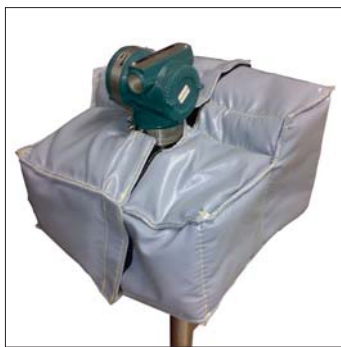


## Sili-Jaxx®

DP Systems is also known as a supplier of flexible, silicone jackets.

These sili-jaxx are available for almost any valve size. The maximum working temperature is up to circa +230°C. As shown below, the high isolating sili-jaxx means energy savings for many kinds of processes. The low-cost sili-jaxx from DP Systems are easy to install and easy to remove on site, which saves time and effort.

Sili-jaxx can be tailor-made manufactured for every industrial purpose.

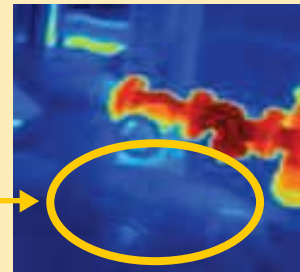


Hot-box with isolating Sili-Jaxx (front)  
(background: opened Hot-box)

Isolating valves with valve jackets means energy savings



Non-isolated valve above  
Isolated valve in circle



Heat losses (heat camera detection)  
Isolated valve shows zero heat emission

# Sunshades

This low cost range of covers offers protection of instrumentation against direct sunlight, acid rain and snow. These shades improve instrument accuracy by eliminating temperature increase due to direct sunlight. The covers also provide protection from falling liquids and debris. Supplied complete with mounting clamp for mounting cover on 2" N/B standpipe. Two types of clamps are available mounted either on the back or top panel.



Series 99-1  
Standard



Series 99-2  
Full sided



## SPECIFICATIONS

### Performance

- Protection rating to IP 66 BS 5490/IEC 529
- Temperature range - 55° C to +80° C
- Non absorption of hydrocarbons
- Impact resistant to BS5501
- Resistant to most corrosive types of industrial environments, acids and alkalis.
- Fire retardant to BS476 part 7 class 2 and self-extinguishing (option class 1).
- Available anti-static to BS5501.
- Standard colour light grey, BS4800, 10-A-03 (other colours available).

## ORDERING AND QUOTATION INFO

TYPE	-	MODEL	-	OPTIONS
Series 22		1		W = Window
Series 33		1A		AS = Anti-static
Series 44		2		IP = Internal post
Series 55				BM = Base mounted
Series 66				RMV = Rear mounting vertical straps
Series 77				RMH = Rear mounting horizontal straps
Series 88				L = Louvre
Series 99				JB = Junction box
				HA = Heater electrical
				HS = Heater steam
				CJ = Cable entries / glands
				ES = Earthing straps

### Sales office DP Systems:

#### ITE De Gidts & Feldman BV

member of

De Gidts & Feldman Groep

**Telephone: +31 (0)36 531 40 14**

**Fax: +31 (0)36 531 36 84**

**E-mail: salesdept@gidts-feldman.nl**

**Postal address: P.O. Box 50041  
1305 AA Almere  
The Netherlands**

**Website: www.gidts-feldman.nl**

**Our complete delivery program:  
www.gidts-feldman.nl**